



Sunnyvale

# Stevens Creek Trail Extension Project Remington Drive to Fremont Avenue

City Council  
March 21, 2023



# Funding

- Current project
  - ◆ Environmental, Permitting and Design
  - ◆ VTA 2016 Measure B Sales Tax - \$3.5M
  - ◆ City Local Match - \$400,000
  - ◆ Construction cost estimates to be completed
- Construction
  - ◆ Costs currently anticipated to be \$30M to \$40M
  - ◆ Partially identified and allocated
  - ◆ City looking for remainder



# Purpose of Current Outreach

- Update the community
- Receive feedback
- Confirm the off-street alignment selected in 2016
- Confirm the currently proposed changes



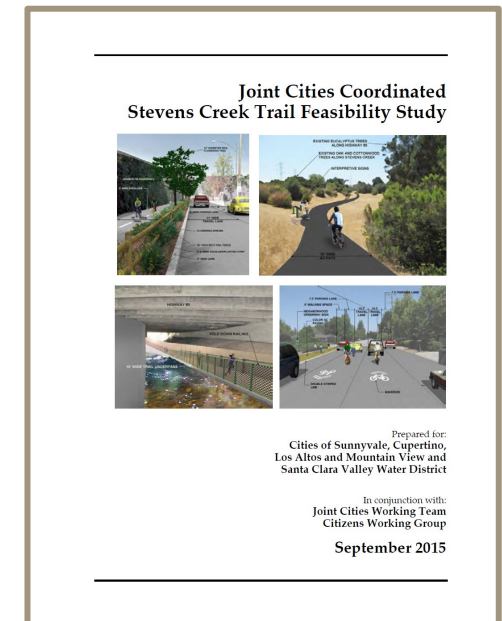


# Project History



# Project History

- Joint Cities Coordinated Stevens Creek Trail Feasibility (2015)
  - ◆ Sunnyvale, Cupertino, Los Altos, Mountain View & Valley Water
  - ◆ Joint Cities Working Team
  - ◆ Citizens Working Group
- Feasibility Study split into 4 segments
  - ◆ Segment 1 - Dale Avenue/Heatherstone Way to Fremont Avenue
  - ◆ Sunnyvale leading Remington-Fremont
- City Council selects alternative (2016)
  - ◆ **“off-street trail along the 22 acres of open of open space along State Route (SR) 85 from Dale Avenue/Heatherstone Way to Fremont Avenue, and connections at Fremont Avenue, on both sides of SR 85.”**



# Alignment Evaluation

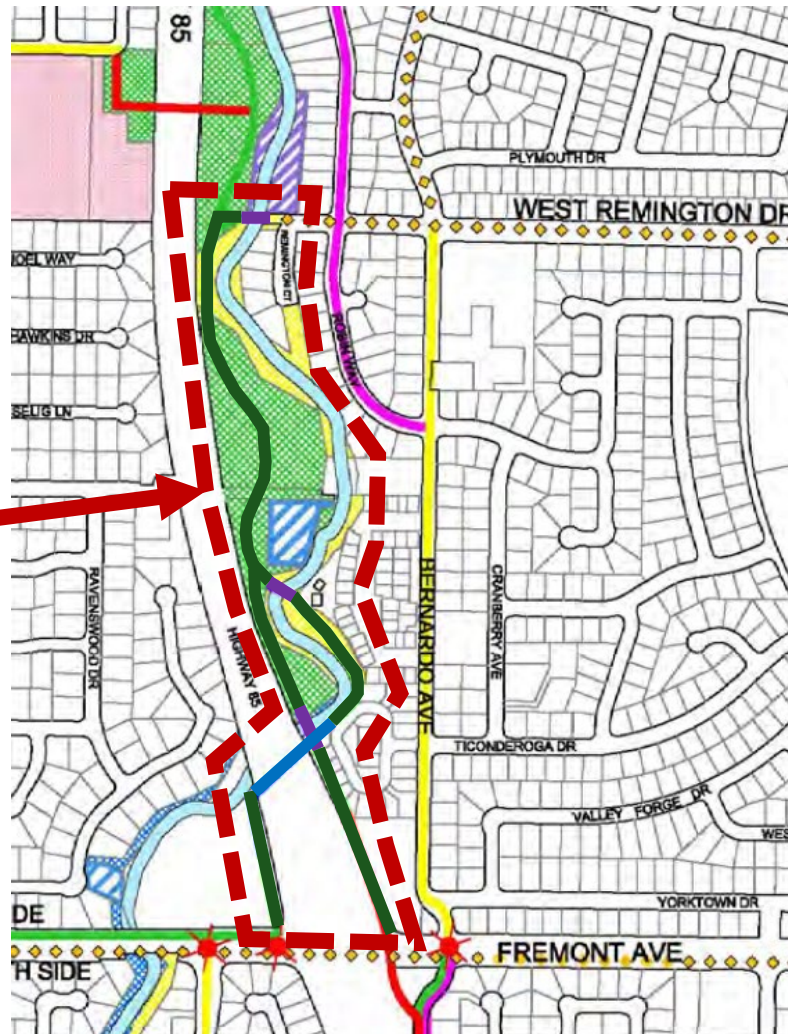
- Goals:
  - ◆ Evaluate the previous City Council approved off-street alignment for any changes
  - ◆ Evaluate challenges, user comfort and costs
  - ◆ Consistency with past planning efforts





# 2016 Council Approved Alignment

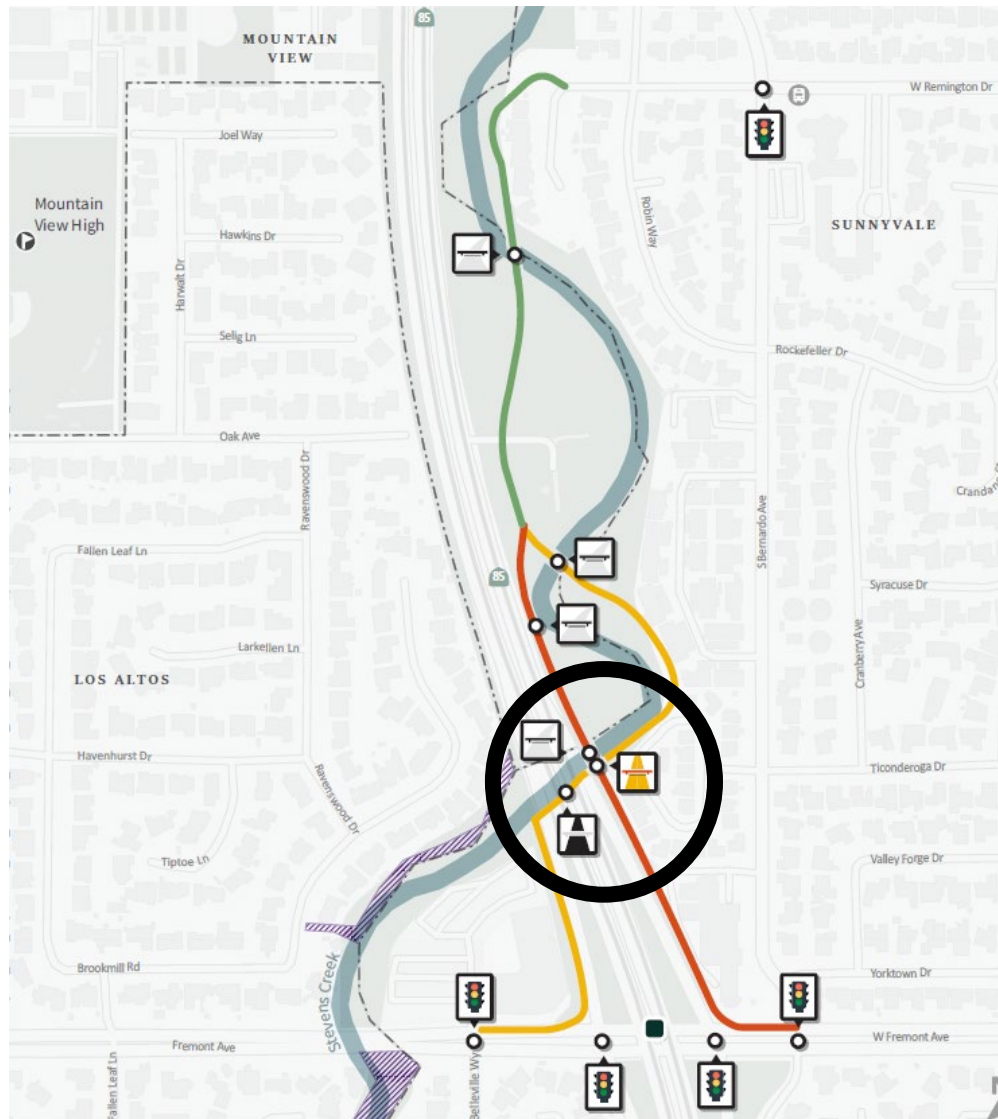
City Council  
approved  
alignment,  
Feb. 6, 2016



## LEGEND

- STEVENS CREEK
- CITY OF MOUNTAIN VIEW
- CITY OF SUNNYVALE
- SCVWD
- CALTRANS
- PG&E
- CAL WATER
- MOUNTAIN VIEW/LOS ALTOS HIGH SCHOOL DISTRICT
- SUNNYVALE SCHOOL DISTRICT
- LOS ALTOS SCHOOL DISTRICT
- POTENTIAL ROUTES AND FACILITIES
- PEDESTRIAN/BIKE PATH
- CLASS II BIKE LANE
- EXISTING CLASS II BIKE LANE
- NEIGHBORHOOD GREENWAY
- UNDERPASS AND RAMPS
- PEDESTRIAN BRIDGE
- OVERCROSSING AND RAMPS
- PEDESTRIAN/BIKE INTERSECTION IMPROVEMENTS

# Currently Proposed Alignment



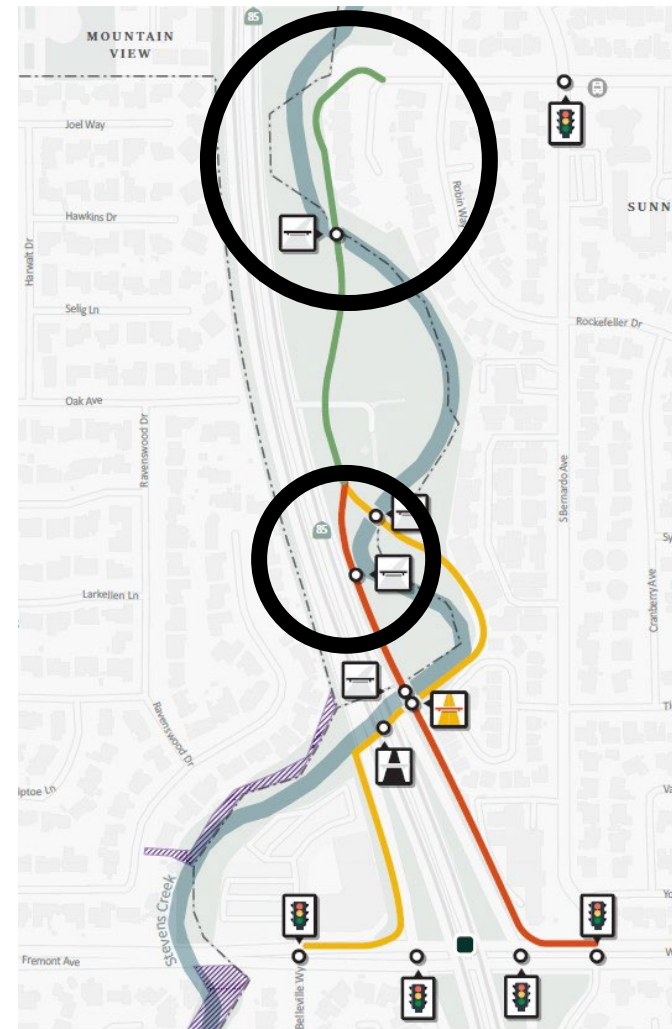
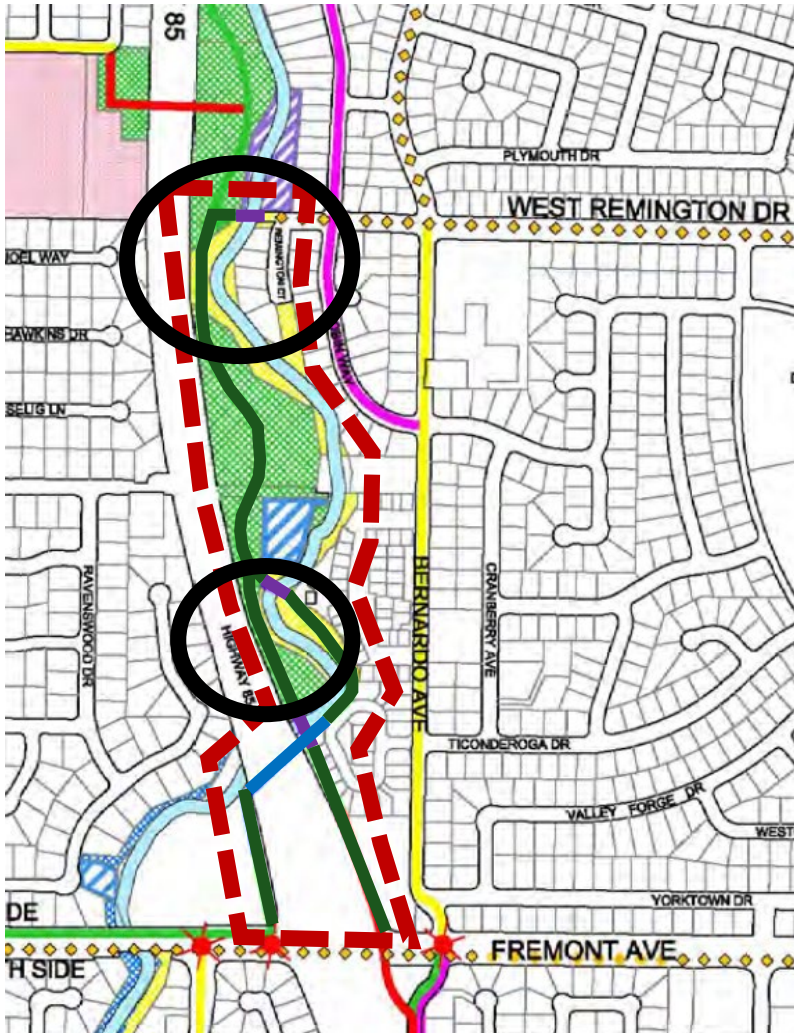
- City Boundary
- SCVWD
- School
- Transit Stops
- Grade Separation
- Bridge Over Creek
- Underpass
- Bridge Over Segment 2
- Existing Traffic Signal

## Trail Segments

- Segment 1: Trail through open space
- Segment 2: SR 85 Underpass
- Segment 3: Adjacent to SR 85 on-ramp



# Alignment Comparison



# Alignment Evaluation

- Segment 1
  - ◆ Changed bridge location
  - ◆ Connects to Remington Drive and Segments 2 and 3
  - ◆ Single bridge over creek
  - ◆ Utilizes open space and stays on top of creek bank
  - ◆ Minimal impacts to sensitive species (flora/fauna) and storm water conveyance





# Alignment Evaluation

- Segment 2 (under SR-85)
  - ◆ Connects Segment 1 to Fremont Avenue on west side of SR-85
  - ◆ Goes under SR-85
  - ◆ Requires large retaining walls and significant grading
  - ◆ Extensive coordination and permitting with Caltrans and environmental agencies
  - ◆ Requires flood control improvements
  - ◆ Could be closed during major storm events





# Alignment Evaluation

- Segment 3 (over Stevens Creek)
  - ◆ Connects Segment 1 to Fremont Avenue on east of SR-85
  - ◆ Added structure for portion of trail close to SR 85
  - ◆ Goes up over the creek and Segment 2
  - ◆ Stays at top of bank along trail alignment
  - ◆ Two bridges over the creek
  - ◆ Some Caltrans coordination
  - ◆ Minimal flood control and sensitive species impacts



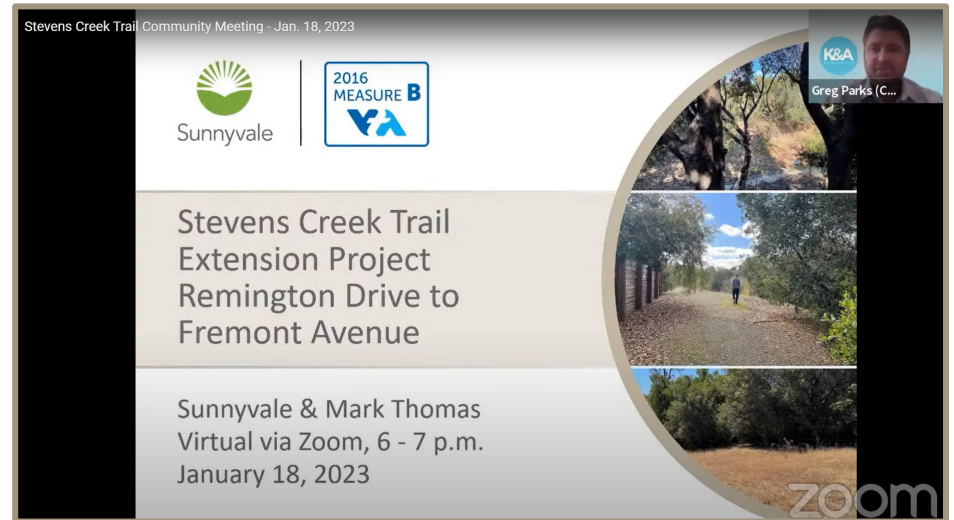
# Alignment Evaluation

---

- Proposed alignment **meets the following goals**
  - ◆ Consistency with Vision
    - Off-street trails; Providing users access to open space and recreational opportunities
  - ◆ Trail User Comfort
    - Provide a high level of user comfort via separation from vehicular traffic
  - ◆ Directness of Route
    - Follows alignment of Stevens Creek
  - ◆ Community Preference
    - Consistent with the preferences of the community and City Council

# Community Meeting, January 18, 2023

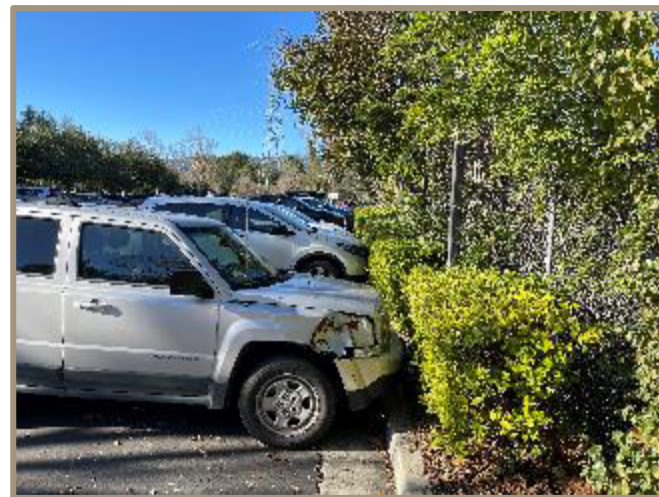
- Community Feedback
  - ◆ In support of project
  - ◆ Most like two Fremont Ave. connections
  - ◆ Interest in locally native plantings
  - ◆ Discussion about open space uses
  - ◆ Interest in and concerns regarding staying along creek
  - ◆ Concerns about crossing Fremont Ave.





# Alignment Evaluation – Community Feedback

- ◆ Alignment along creek at Stanford Medicine Children's Health facility
  - Parking lot generally full much activity
  - Steep slopes with little to no room at the top of the creek banks
  - Alignment through parking lot impacts about 60 spaces (~20%)



# Alignment Evaluation – Community Feedback

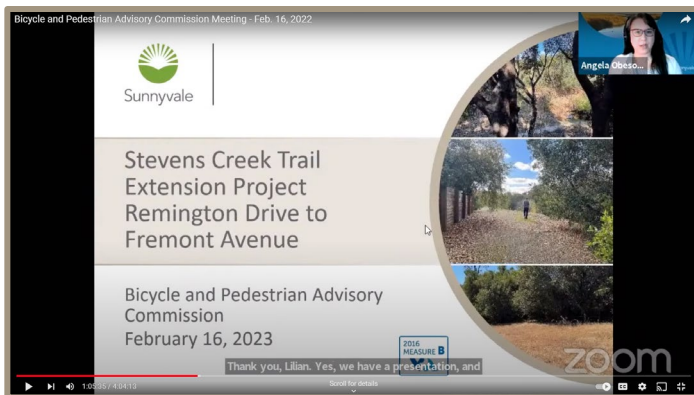
- ◆ Connect to south side of Fremont Avenue
  - Busy interchange with dated design
  - Complicated traffic operations with signals and on/off-ramps
  - Will evaluate options as we move the design forward
- ◆ Options may include:
  - Bike boxes
  - Bicycle signals
  - Protected intersection elements
  - Paths along Fremont Avenue



# Bicycle and Pedestrian Advisory Commission

## February 16, 2023

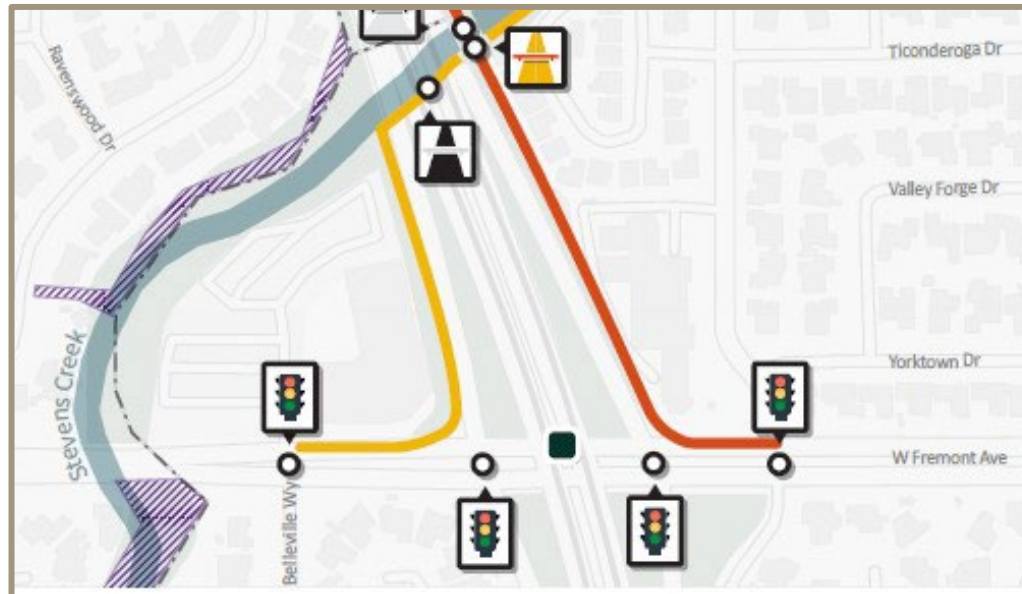
- Approved staff recommendation
- Addition: Segment 3 extends to the southeast corner of Fremont and Bernardo avenues
- Other comments:
  - ◆ Supportive of the project
  - ◆ Concern about safety to cross Fremont Avenue
  - ◆ Interest in seeing final design
  - ◆ Concern about future creek erosion



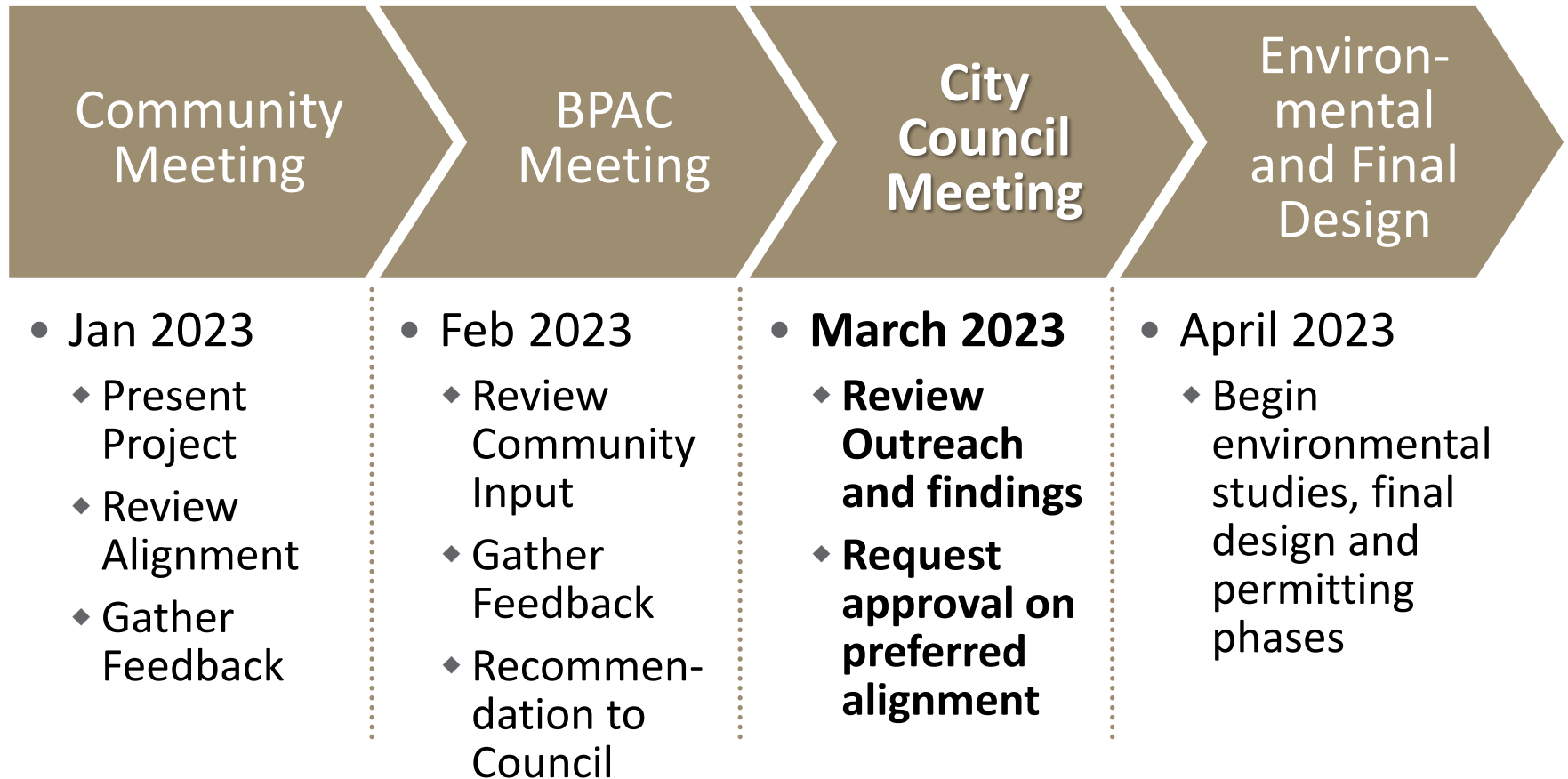


# Bicycle and Pedestrian Advisory Commission

- Project scope includes
  - ◆ Trail connections along Fremont
  - ◆ At-grade crossings of Fremont
  - ◆ Signal modifications at Fremont/Bernardo and Fremont/Belleville

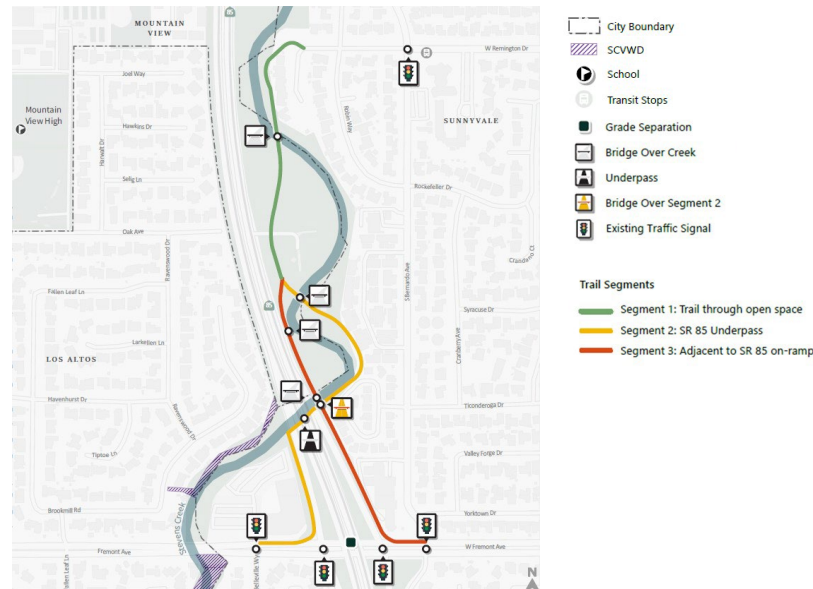


# Next Steps



# Staff Recommendation

Recommend to City Council to Confirm Preferred Alignment of the Stevens Creek Trail for the Remington Drive to Fremont Avenue Segment Consisting of an Off-street Trail Along the Creek with Two Connections at Fremont Avenue on Both Sides of SR 85 with the Adjustments Due to Changes in Creek Conditions.





# Q&A

---

Thank you!