



BERNARDO AVENUE UNDERCROSSING PROJECT

Bicycle/Pedestrian Advisory Committee (BPAC) Meeting
City of Mountain View
Atrium Conference Room, City Hall, February 22, 2023

Introductions

City of Sunnyvale

- ◆ Angela Obeso, Principal Transportation Engineer

City of Mountain View

- ◆ Ria Lo, Transportation Manager

Project Team Consultants

- ◆ Dave Dickinson, WMH – Project Manager

Agenda



I. PROJECT INTRODUCTION

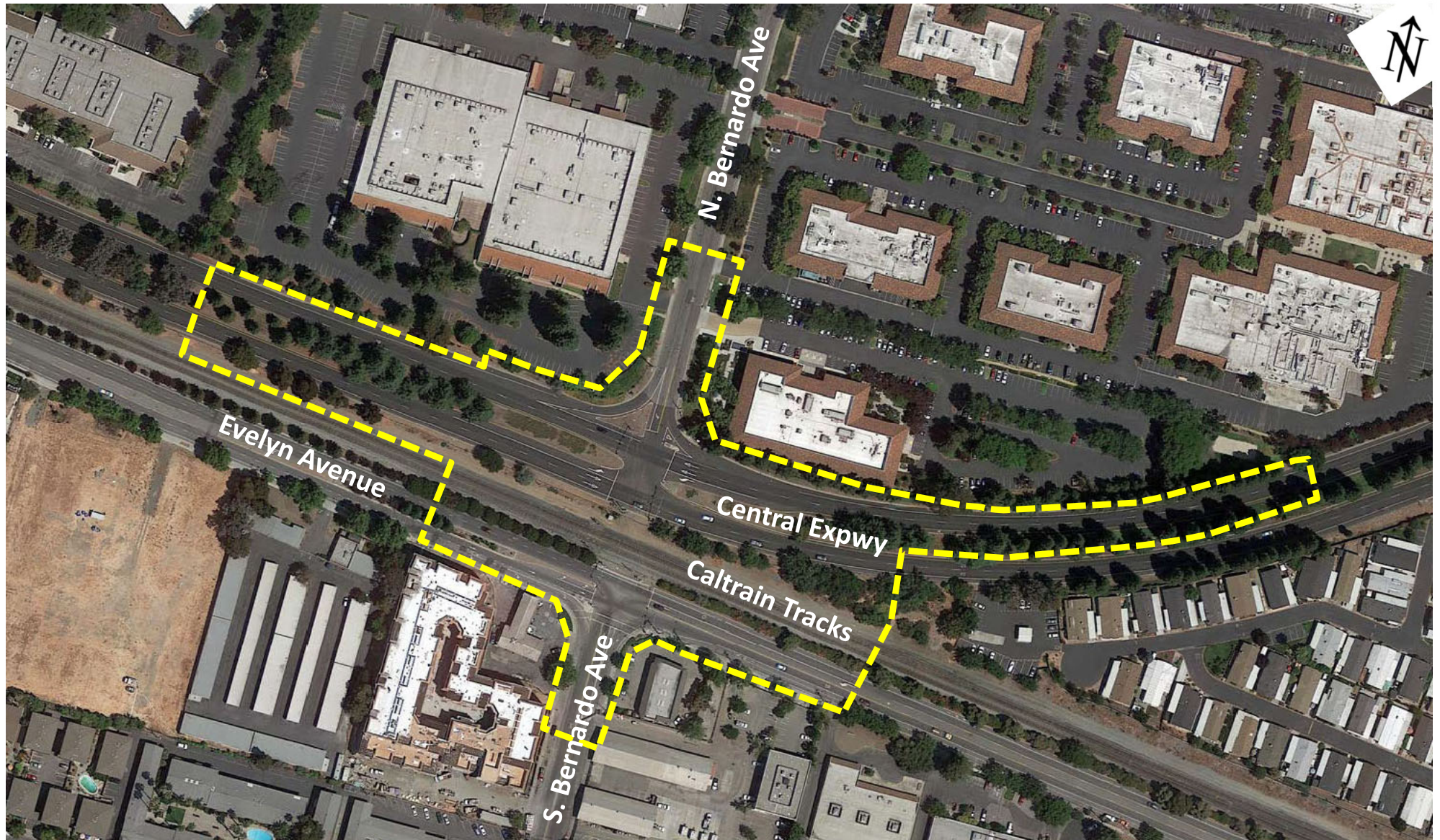
II. PROJECT ALTERNATIVES

III. DESIGN FEATURES TO ENHANCE USER EXPERIENCE

IV. PROJECT PROGRESS

V. DISCUSSION

Project Purpose and Limits



Project Purpose

Existing Access – Evelyn Avenue Intersection



Project Purpose

Existing Access – Central Expressway Intersection



Project Purpose

Existing Bicycle and Pedestrian Routes

Pedestrian Route



1.6 miles, 25 min

Bicycle Route



1.5 miles, 8 min

Project Description and Partners



Central Expressway Undercrossing



Caltrain Undercrossing

Work Performed to Date

- Sunnyvale and Mountain View agreement
- Measure B funding
- Developed conceptual options
- Joint Bicycle and Pedestrian Advisory Commission/Committee (BPAC) Presentation
- Caltrain/Joint Powers Board approved Use Variance
- On-going agency coordination
 - Caltrain
 - County of Santa Clara
 - Mountain View
 - VTA
- Alternative refinements from feedback
- Community Outreach meeting

Agenda

I. PROJECT INTRODUCTION



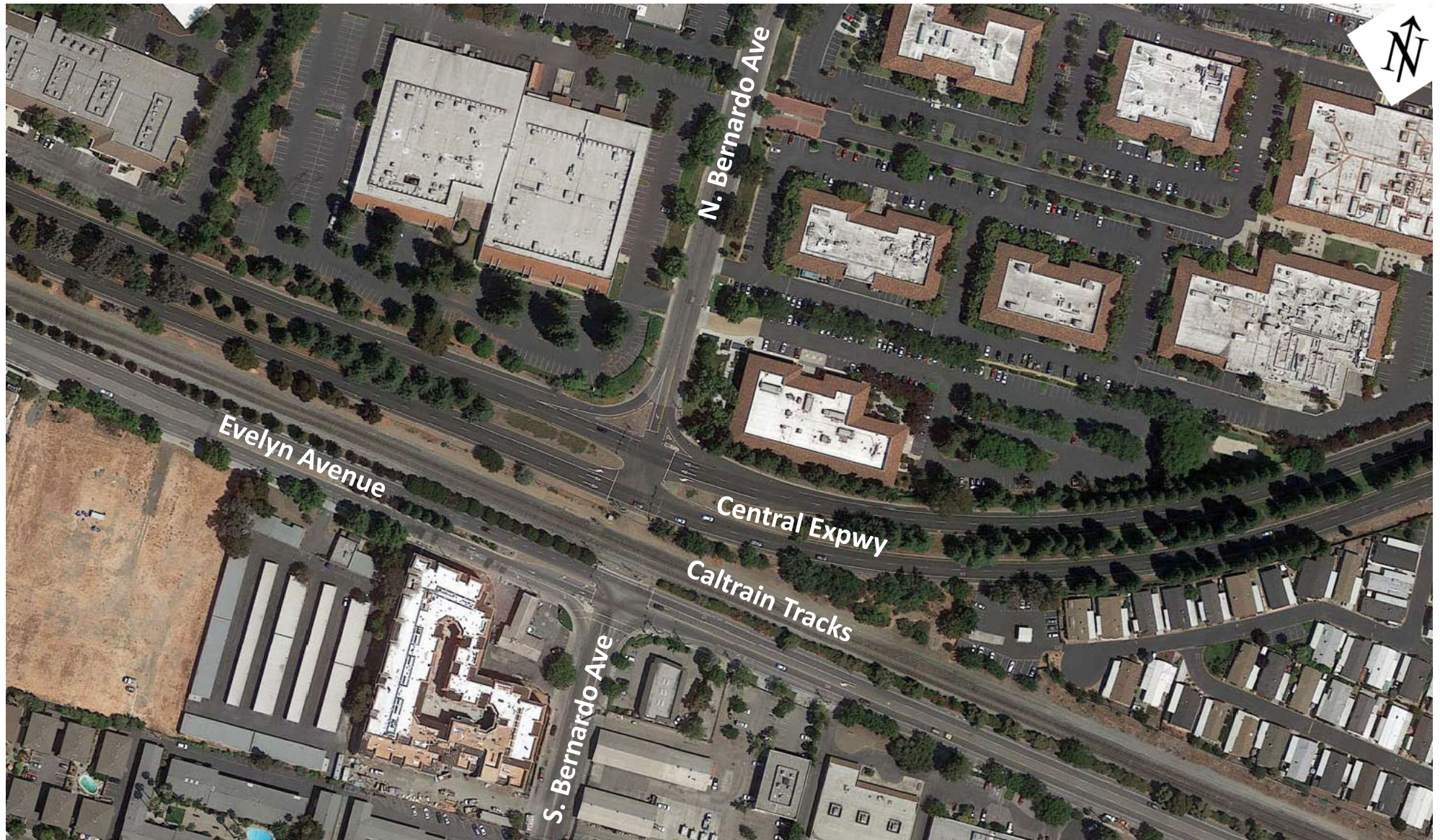
II. PROJECT ALTERNATIVES

III. DESIGN FEATURES TO ENHANCE USER EXPERIENCE

IV. PROJECT PROGRESS

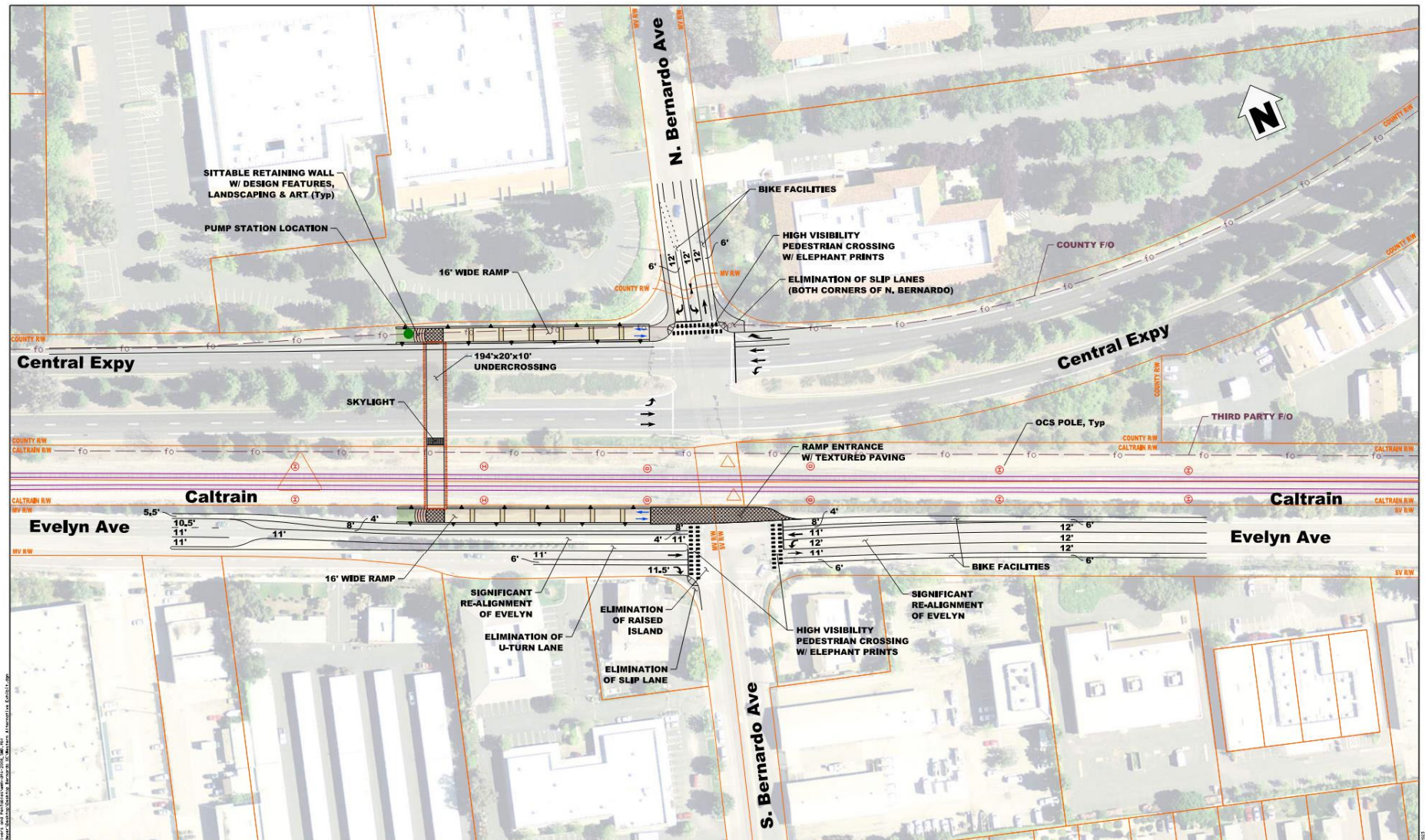
V. DISCUSSION

Project Alternatives



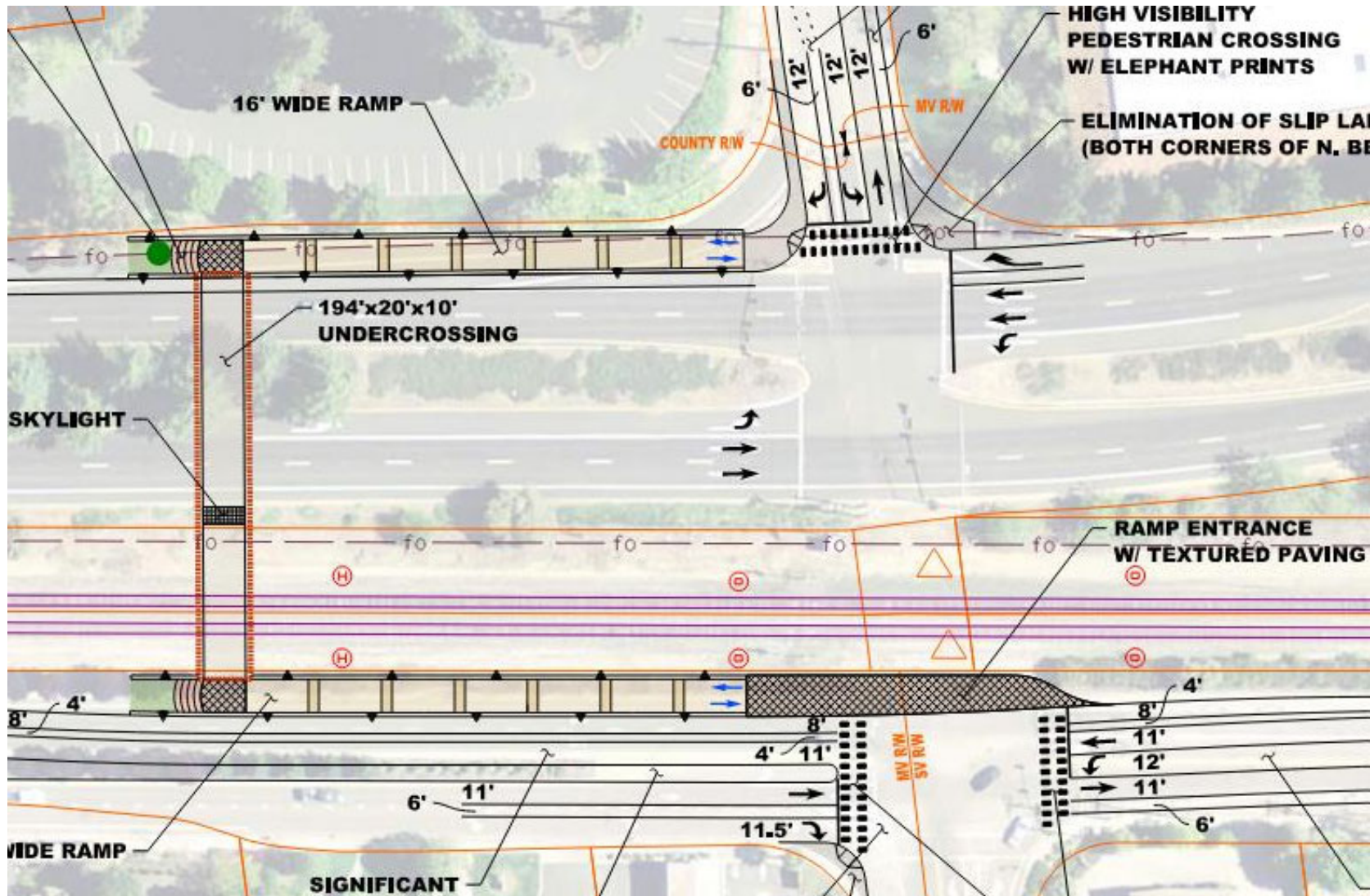
Project Alternatives

Western Alternative



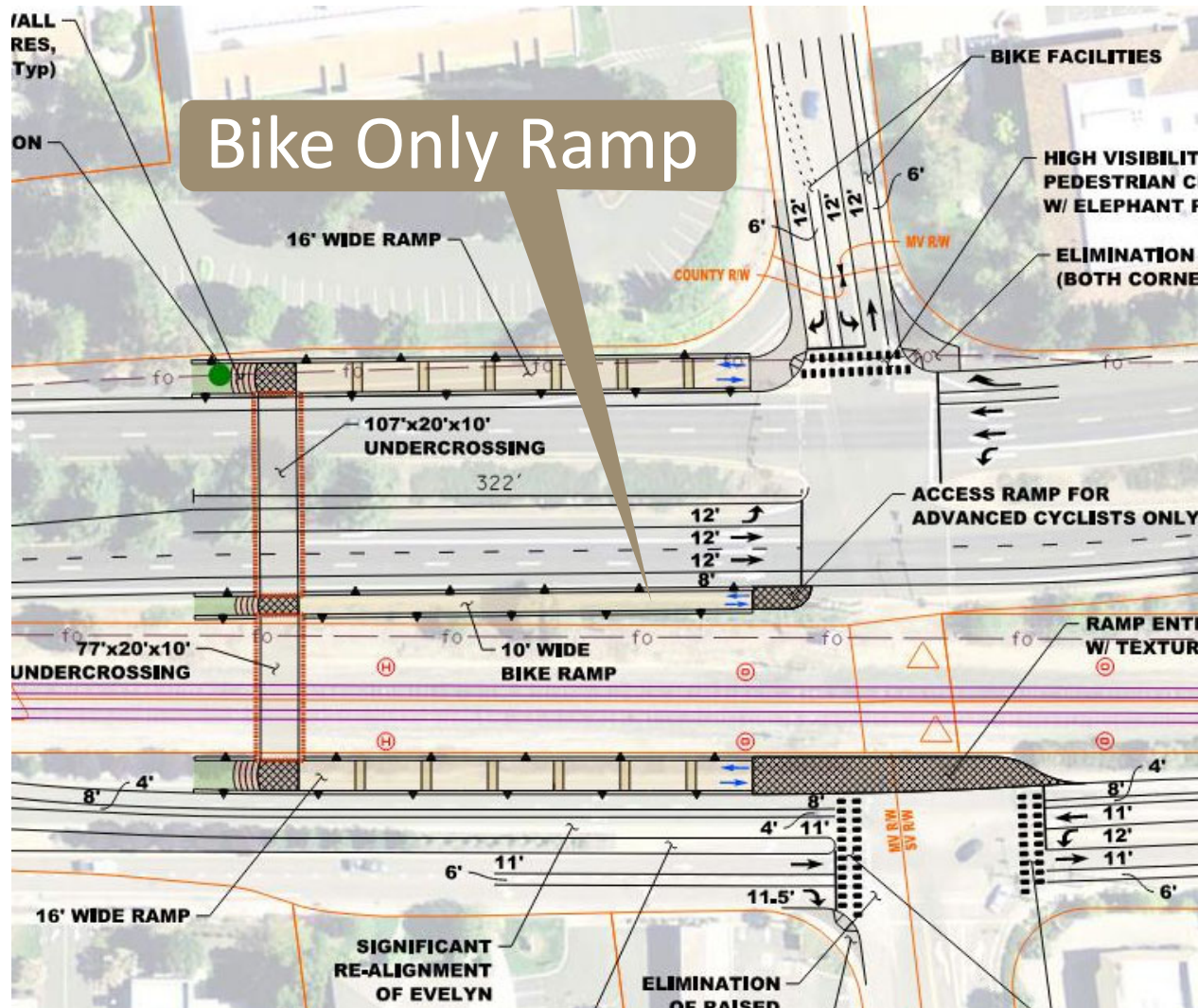
Project Alternatives

Western Alternative



Project Alternatives

Western Alternative with Intermediate Bike Ramp



Benefits:

- More direct access for EB Central Expy cyclists to Bernardo Ave

Concerns:

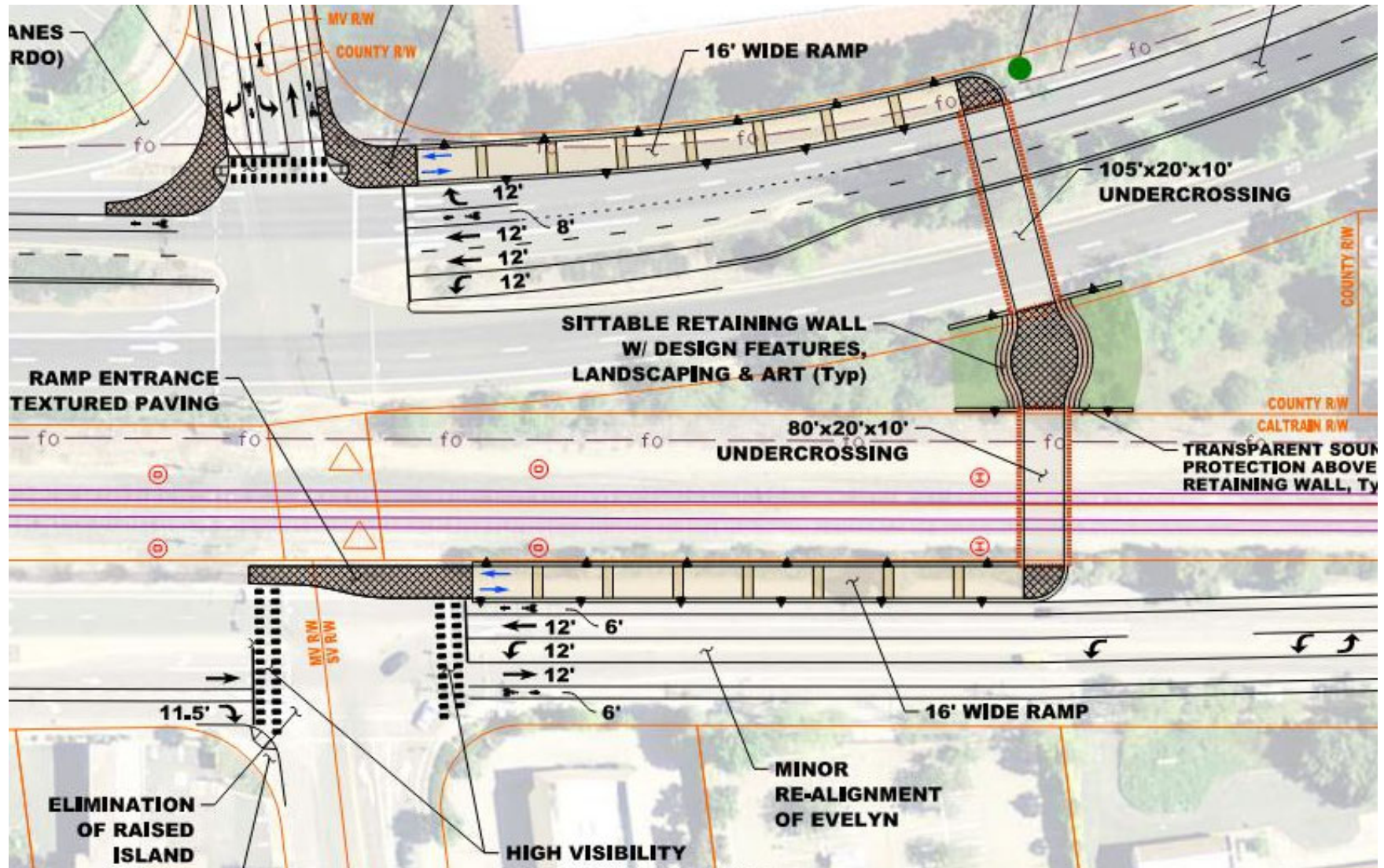
- Potential for unintended pedestrians usage that leads to intersection with no pedestrian facilities
- Central Expy – suitable for advanced cyclists only
- Requires realignment of EB Central Expy and reduction of median width
- Not supported by Caltrain
- Not supported by County – do not want pedestrians at signal
- Additional Cost

Eastern Alternative



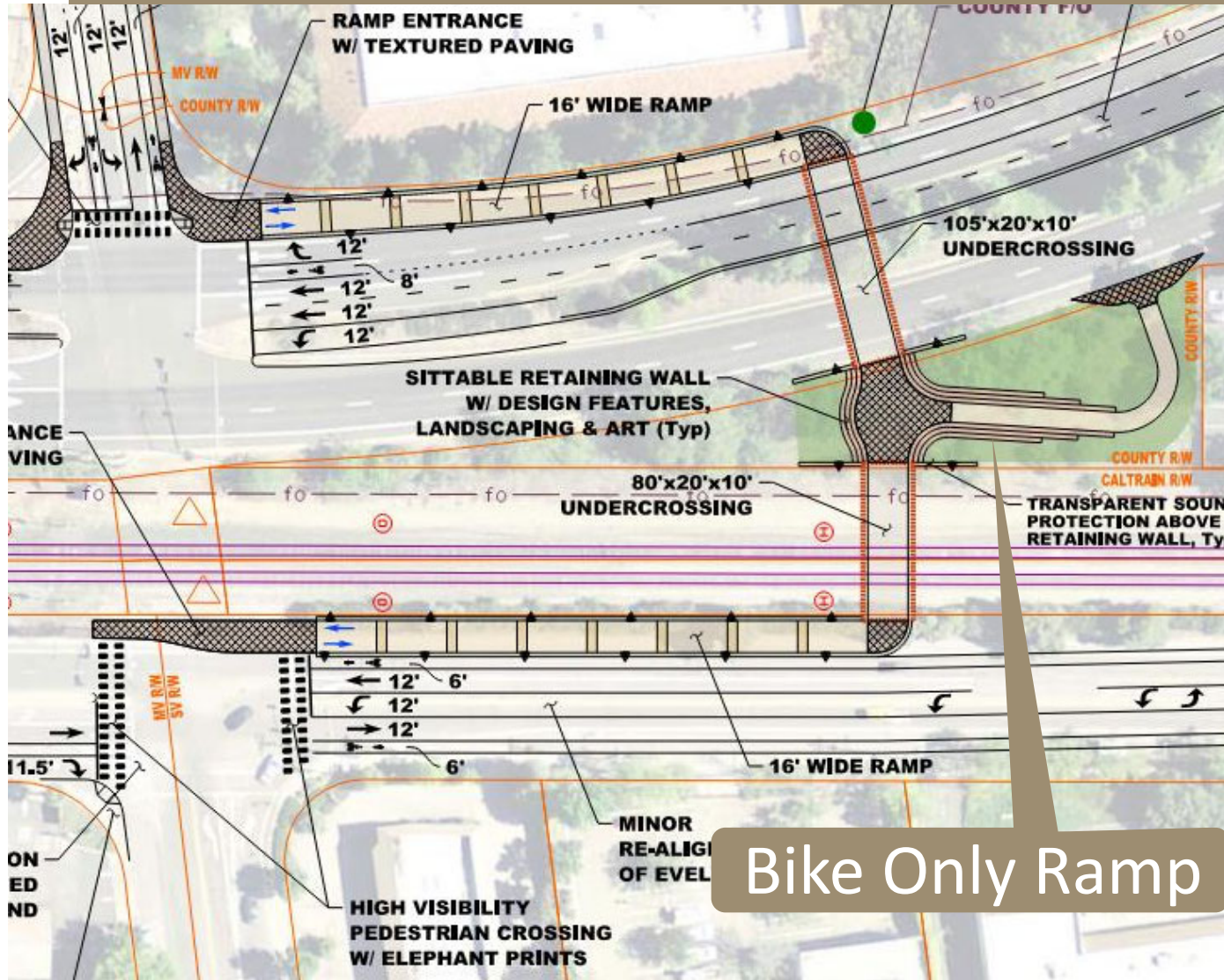
Project Alternatives

Eastern Alternative



Project Alternatives

Eastern Alternative – with Intermediate Bike Ramp



Benefits:

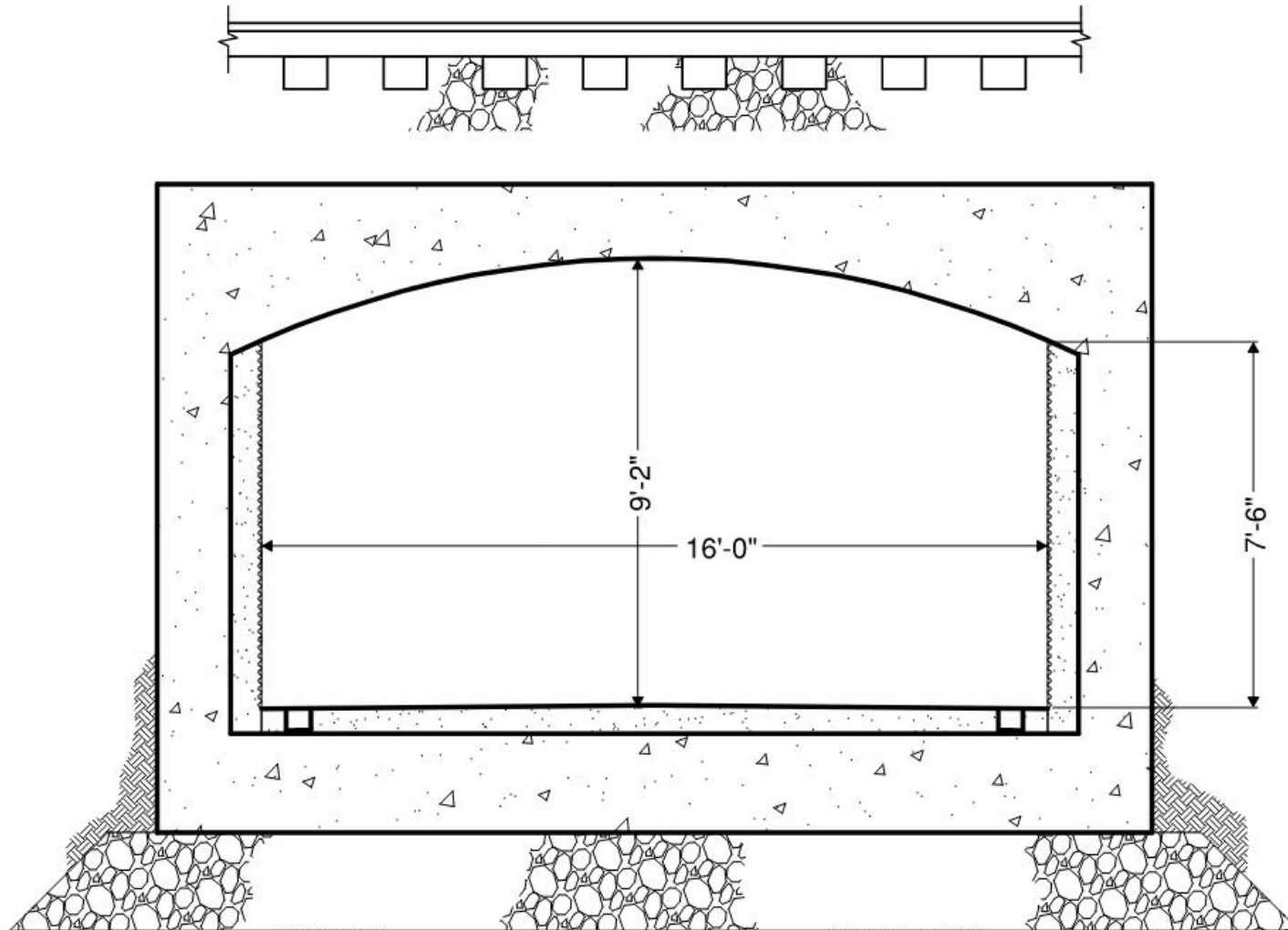
- More direct access for EB Central Expy cyclists to Bernardo Ave.

Concerns:

- Potential for unintended pedestrians usage that leads to Central Expy with no pedestrian facilities
- Central Expy suitable for advanced cyclists only
- Additional Tree loss
- Additional Cost

Project Alternatives

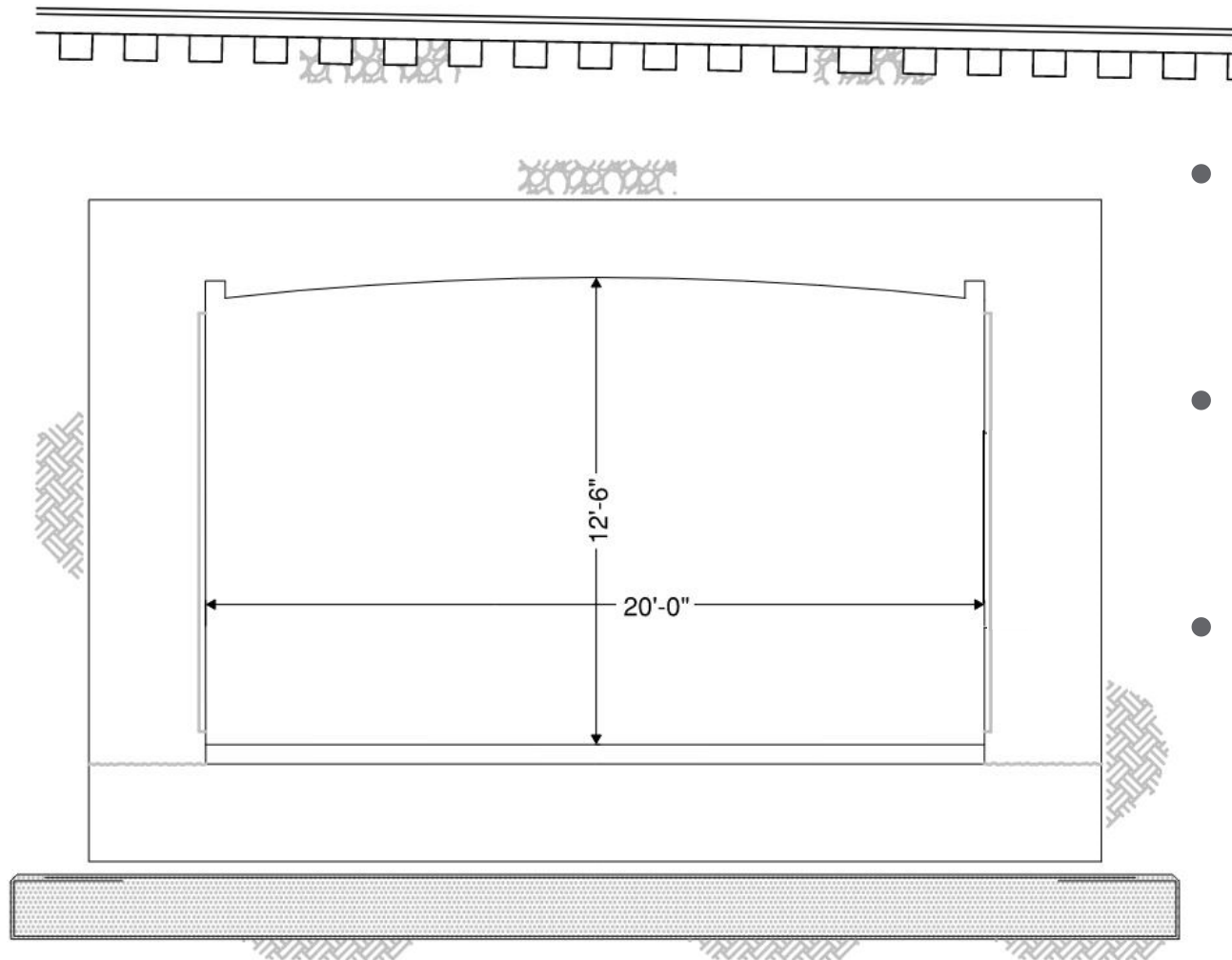
Undercrossing Cross-Section Options



Santa Clara Caltrain Station

Project Alternatives

Undercrossing Cross-Section Options



- Larger Dimensions
- Arched Roof
- Recessed Lighting

Burlingame (currently in Design)

Agenda

I. PROJECT INTRODUCTION

II. PROJECT ALTERNATIVES



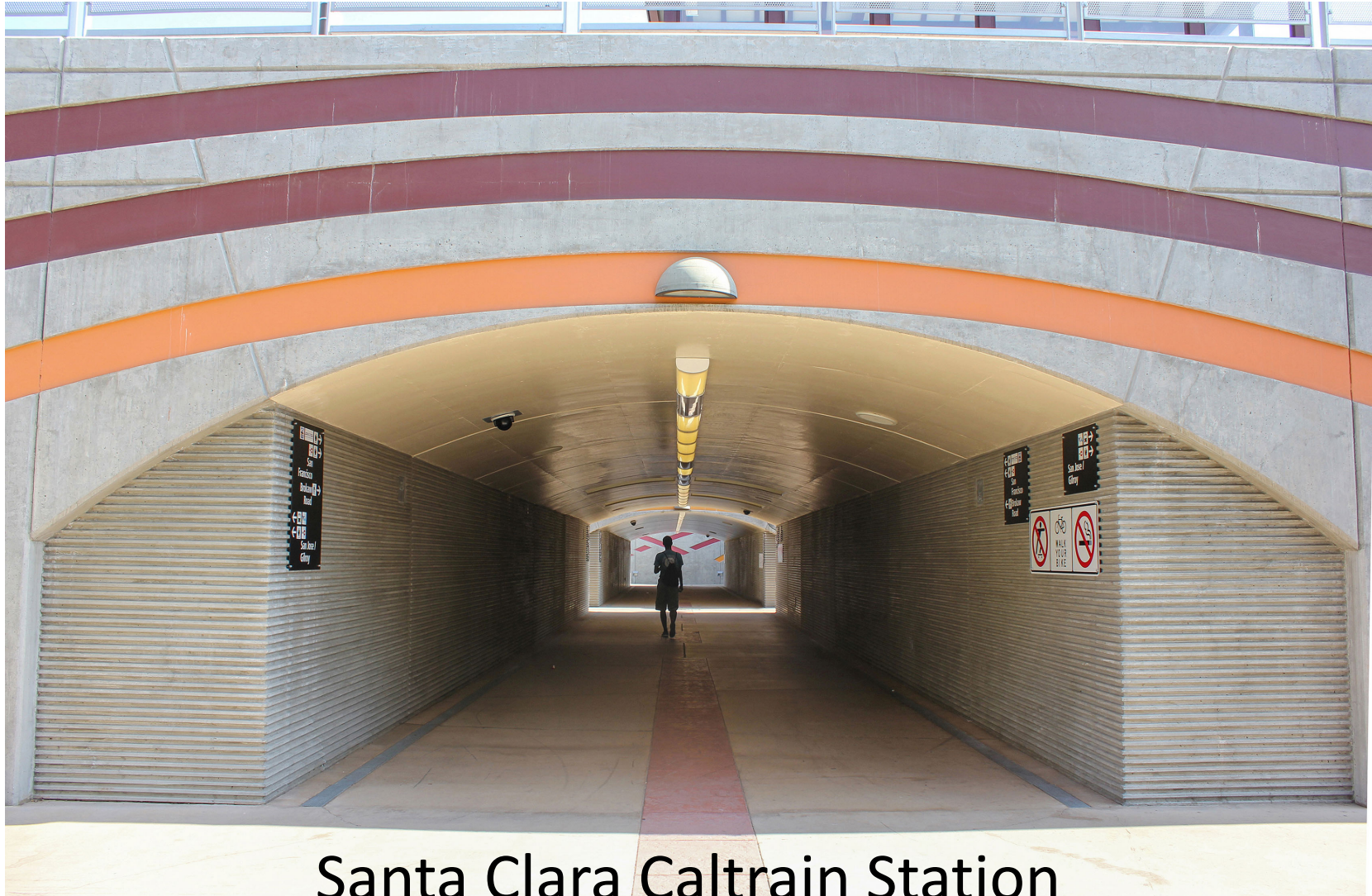
III. DESIGN FEATURES TO ENHANCE USER EXPERIENCE

IV. PROJECT PROGRESS

V. DISCUSSION

Design Features to Enhance User Experience

Comfort, Accessibility, Lighting, etc.



Santa Clara Caltrain Station

Design Features to Enhance User Experience

Comfort, Accessibility, Lighting, etc.



Santa Clara Caltrain Station

Design Features to Enhance User Experience



- Architectural Treatment
- Mirrors
- Good Lighting

Santa Clara Caltrain Station

Design Features to Enhance User Experience

Comfort, Accessibility, Lighting, etc.



- Convenient, direct access
- Artwork - Mural

California Avenue PUC (Palo Alto)

Design Features to Enhance User Experience

Comfort, Accessibility, Lighting, etc.



California Avenue PUC (Palo Alto)

Design Features to Enhance User Experience

Comfort, Accessibility, Lighting, etc.



- Wide Undercrossing
- Good Lighting

Homer Avenue (Palo Alto)

Design Features to Enhance User Experience


Comfort, Accessibility, Lighting, etc.



- Good Lighting
- Nice alternative to crossing El Camino Real

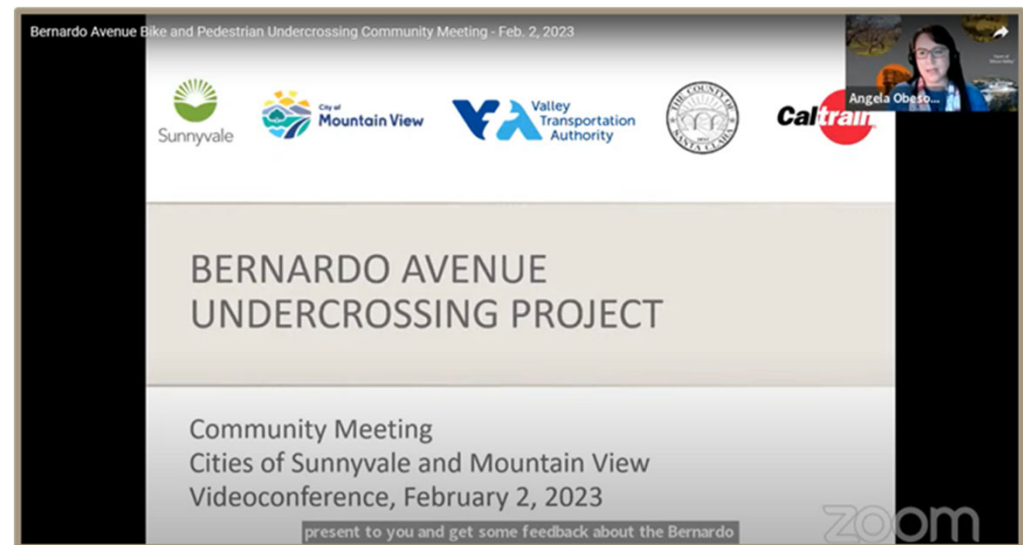
Stevens Creek Trail @ El Camino (Mountain View)

Agenda

- I. PROJECT INTRODUCTION
- II. PROJECT ALTERNATIVES
- III. DESIGN FEATURES TO ENHANCE USER EXPERIENCE
-  **IV. PROJECT PROCESS**
- V. DISCUSSION

Community Meeting, Feb. 2, 2023

- Significant outreach effort
- Very supportive of project
- Eastern Alternative preferred
 - Mid-crossing opening
 - Natural light
 - Less expensive
 - Drainage concerns
- Other comments:
 - Separation of bicyclists and pedestrians
 - Flatten ramp areas
 - Concerns about sharp turns
 - Protect ramp openings



Tonight's Objective

Primary Goal – Recommend Alternative

- Alternative Selection – Western or Eastern
- Project for environmental clearance
- Project footprint
 - ◆ Tunnel dimensions
 - ◆ Depth of tunnel
 - ◆ Length of ramps
 - ◆ Construction method options

Community Outreach for Determination of Preferred Alternative





BERNARDO AVENUE UNDERCROSSING PROJECT DISCUSSION

Which Alternative Do You Prefer:
WESTERN OR EASTERN?