



Sunnyvale

Stevens Creek Trail Extension Project Remington Drive to Fremont Avenue

Bicycle and Pedestrian Advisory
Commission
February 16, 2023

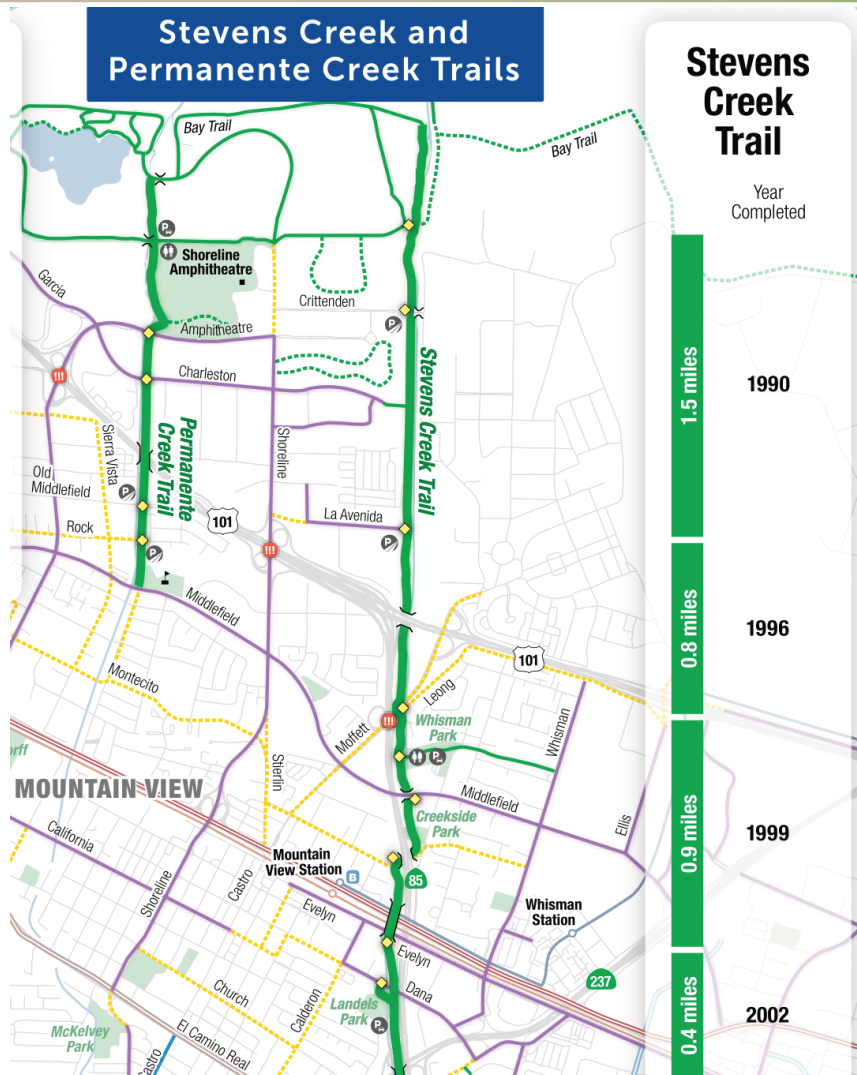


Purpose of Outreach

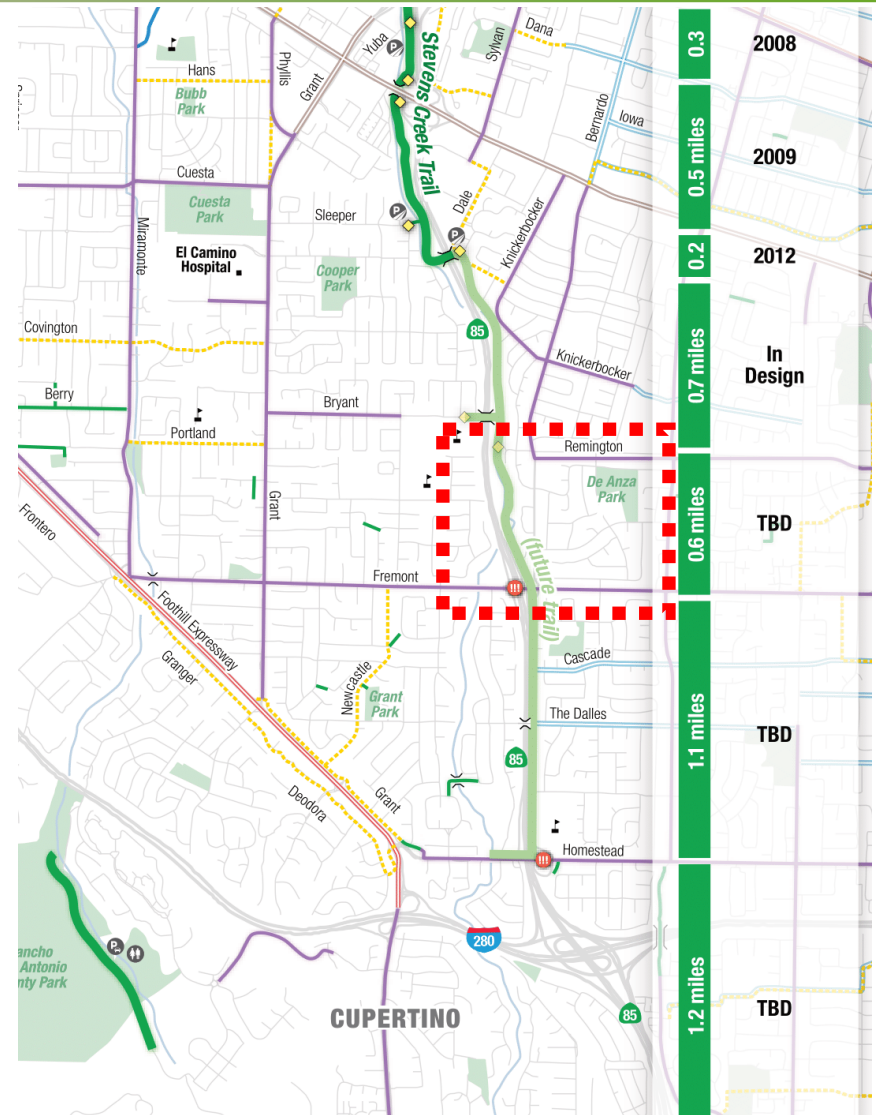
- Update the community
- Receive feedback
- Confirm the off-street alignment selected in 2016
- Confirm the currently proposed changes



Project History

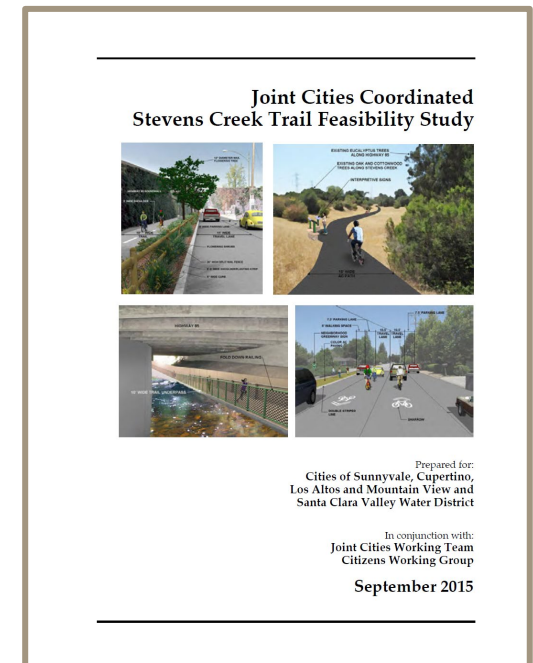


Source: VTA Bikeways Map



Project History

- Joint Cities Coordinated Stevens Creek Trail Feasibility (2015)
 - ◆ Sunnyvale, Cupertino, Los Altos, Mountain View & Valley Water
 - ◆ Joint Cities Working Team
 - ◆ Citizens Working Group
- Feasibility Study split into 4 segments
 - ◆ Segment 1 - Dale Avenue/Heatherstone Way to Fremont Avenue
- City Council selects alternative (2016)
 - ◆ “off-street trail along the 22 acres of open open space along State Route (SR) 85 from Dale Avenue/Heatherstone Way to Fremont Avenue, and connections at Fremont Avenue, on both sides of SR 85.”
- Sunnyvale leading Remington Drive to Fremont Avenue



Project History



Funding

- Current project
 - ♦ Environmental, Permitting and Design
 - ♦ VTA 2016 Measure B Sales Tax - \$3.5M
 - ♦ City Local Match - \$400,000
 - ♦ Construction cost estimates to be completed
- Construction
 - ♦ Costs currently anticipated to be \$30M to \$40M
 - ♦ Partially identified and allocated
 - ♦ City looking for remainder



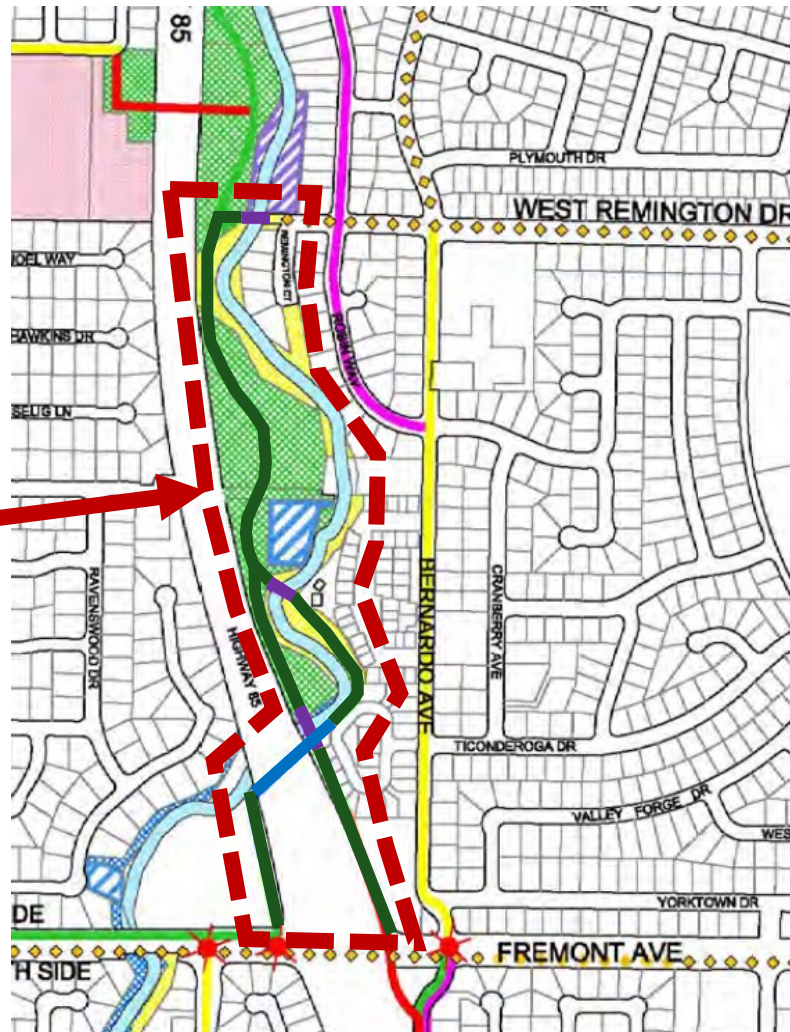
Alignment Evaluation

- Goals:
 - ◆ Evaluate the previous City Council approved off-street alignment for any changes
 - ◆ Evaluate challenges, user comfort and costs
 - ◆ Consistency with past planning efforts



2016 Council Approved Alignment

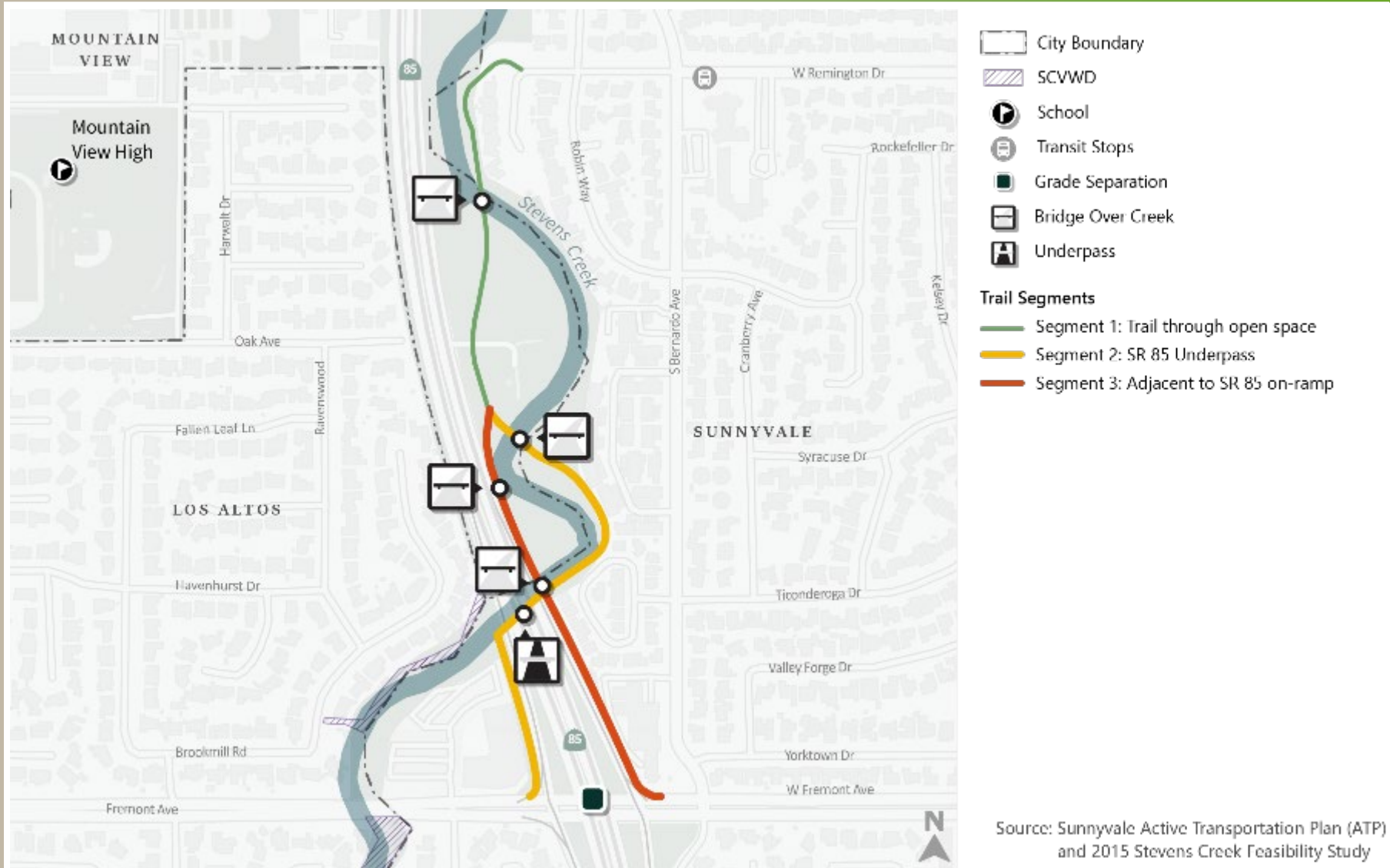
City Council
approved
alignment,
Feb. 6, 2016



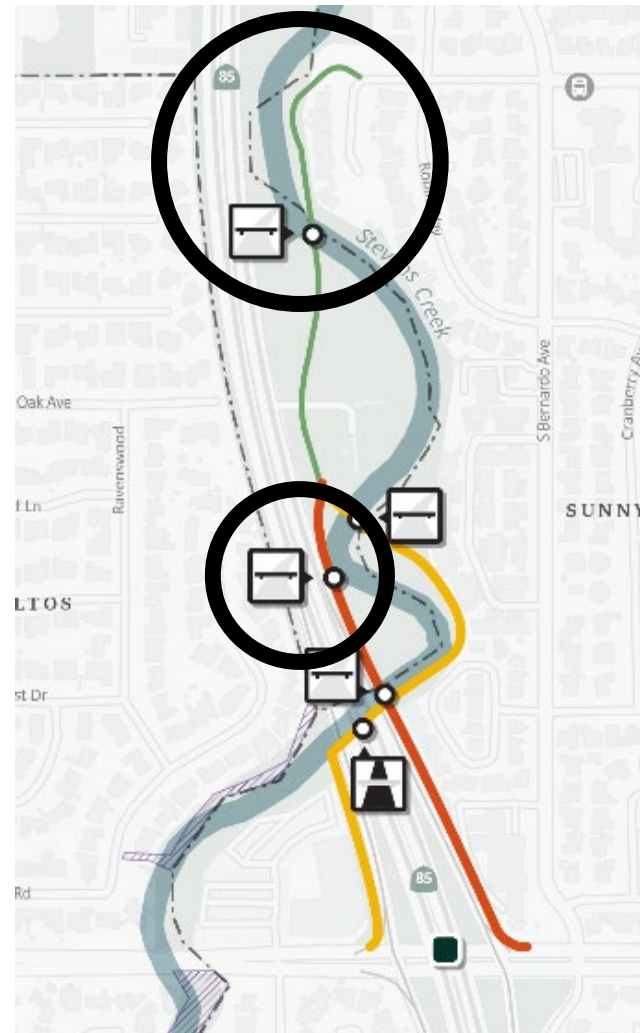
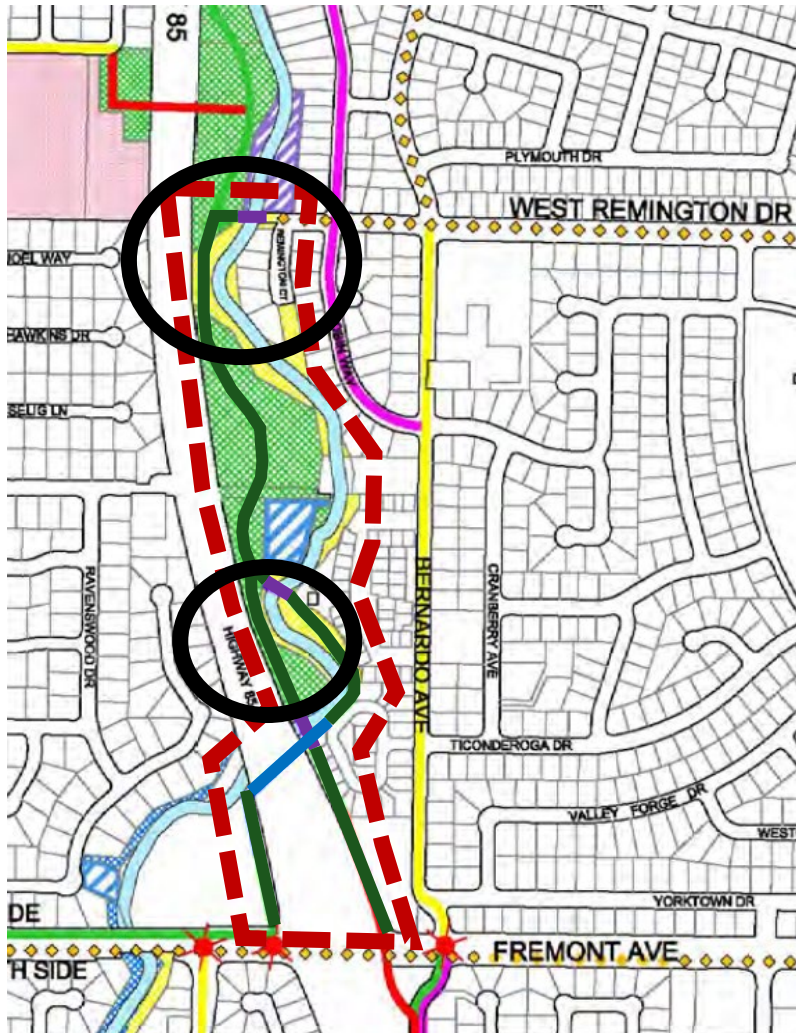
LEGEND

- STEVENS CREEK
- CITY OF MOUNTAIN VIEW
- CITY OF SUNNYVALE
- SCVWD
- CALTRANS
- PG&E
- CAL WATER
- MOUNTAIN VIEW/LOS ALTOS HIGH SCHOOL DISTRICT
- SUNNYVALE SCHOOL DISTRICT
- LOS ALTOS SCHOOL DISTRICT
- POTENTIAL ROUTES AND FACILITIES
- PEDESTRIAN/BIKE PATH
- CLASS II BIKE LANE
- EXISTING CLASS II BIKE LANE
- NEIGHBORHOOD GREENWAY
- UNDERPASS AND RAMPS
- PEDESTRIAN BRIDGE
- OVERCROSSING AND RAMPS
- PEDESTRIAN/BIKE INTERSECTION IMPROVEMENTS

Currently Proposed Alignment



Alignment Comparison



Alignment Evaluation

- Segment 1
 - ◆ Changed bridge location
 - ◆ Connects to Remington Drive and Segments 2 and 3
 - ◆ Single bridge over creek
 - ◆ Utilizes open space and stays on top of creek bank
 - ◆ Minimal impacts to sensitive species (flora/fauna) and storm water conveyance



Alignment Evaluation

- Segment 2 (under SR-85)
 - ◆ Connects Segment 1 to Fremont Avenue on west side of SR-85
 - ◆ Goes under SR-85
 - ◆ Requires large retaining walls and significant grading
 - ◆ Extensive coordination and permitting with Caltrans and environmental agencies
 - ◆ Requires flood control improvements
 - ◆ Could be closed during major storm events



Alignment Evaluation

- Segment 3 (over Stevens Creek)
 - ◆ Connects Segment 1 to Fremont Avenue on east of SR-85
 - ◆ Added structure for portion of trail close to SR 85
 - ◆ Goes up over the creek and Segment 2
 - ◆ Stays at top of bank along trail alignment
 - ◆ Two bridges over the creek
 - ◆ Some Caltrans coordination
 - ◆ Minimal flood control and sensitive species impacts

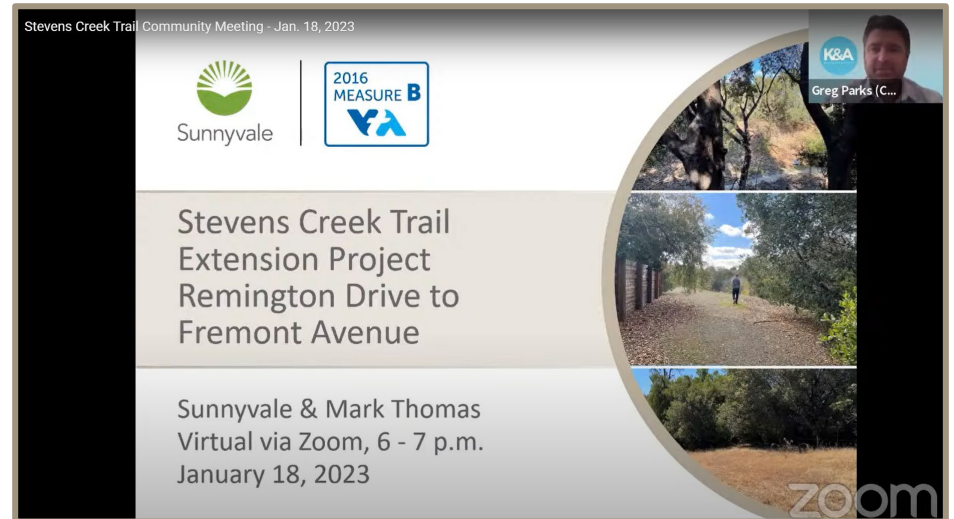


Alignment Evaluation

- Proposed alignment **meets the following goals**
 - ◆ Consistency with Vision
 - Off-street trails; Providing users access to open space and recreational opportunities
 - ◆ Trail User Comfort
 - Provide a high level of user comfort via separation from vehicular traffic
 - ◆ Directness of Route
 - Follows alignment of Stevens Creek
 - ◆ Community Preference
 - Consistent with the preferences of the community and City Council

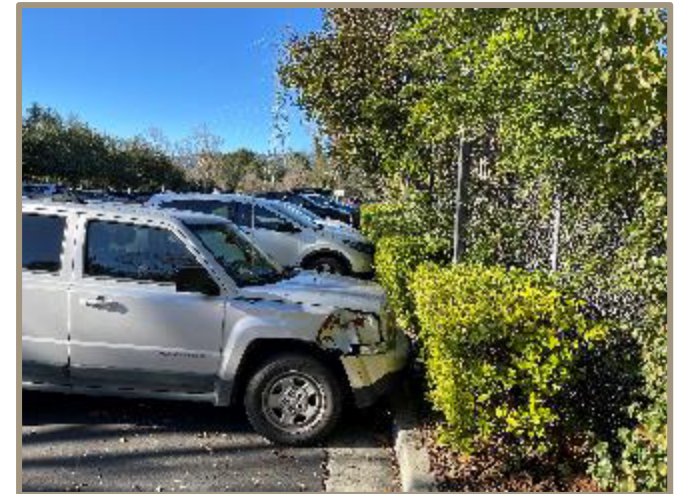
Community Meeting, January 18, 2023

- Community Feedback
 - ◆ In support of project
 - ◆ Most like two Fremont Ave. connections
 - ◆ Interest in locally native plantings
 - ◆ Discussion about open space uses
 - ◆ Interest in and concerns regarding staying along creek
 - ◆ Concerns about crossing Fremont Ave.



Alignment Evaluation – Community Meeting

- Community Feedback
 - ◆ Explore an alignment adjacent to or through the Stanford Medicine Children's Health facility
 - Completed a field walk
 - Parking lot generally full with lots of activity
 - Steep slopes with little to no room at the top of the creek banks
 - Alignment through parking lot impacts about 60 spaces (~20%)

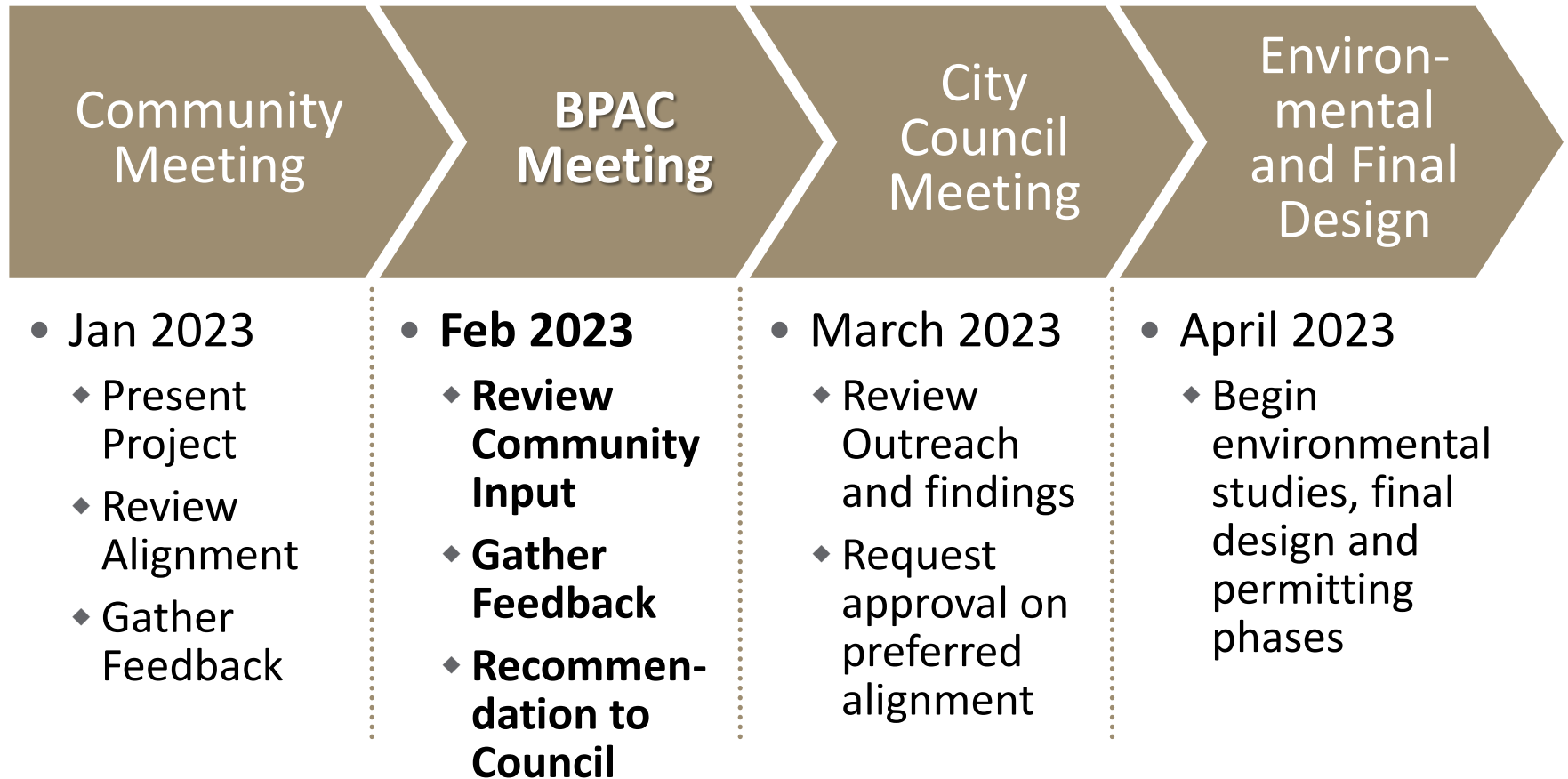


Alignment Evaluation – Community Meeting

- Community Feedback
 - ◆ Explore options to get to the south side of Fremont Avenue
 - Completed a field walk
 - Busy interchange with dated design
 - Complicated traffic operations with signals and on/off-ramps
 - Will evaluate options as we move the design forward

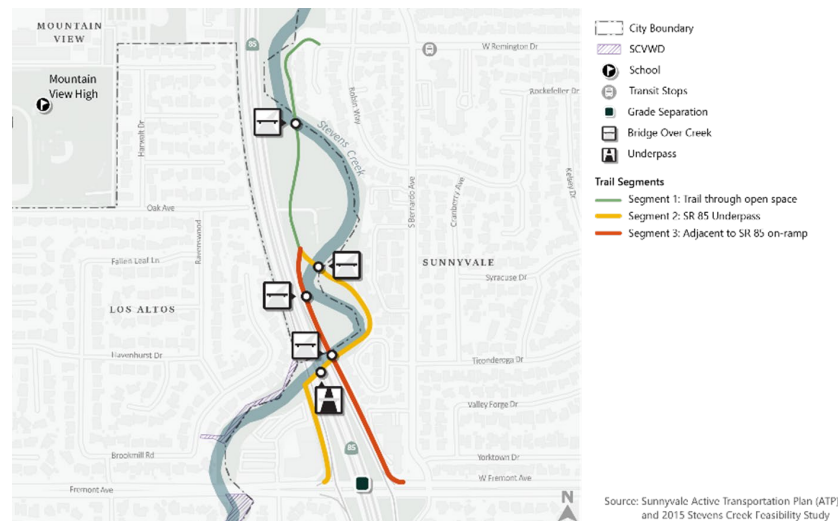


Next Steps



Staff Recommendation

Recommend to City Council to Confirm Preferred Alignment of the Stevens Creek Trail for the Remington Drive to Fremont Avenue Segment Consisting of an Off-street Trail Along the Creek with Two Connections at Fremont Avenue on Both Sides of SR 85 with the Adjustments Due to Changes in Creek Conditions.



Q&A

Thank you!