



Sunnyvale

## News Release

**Contact:**

Jennifer Garnett, APR  
408-718-2601  
jgarnett@sunnyvale.ca.gov

**For Immediate Release:**

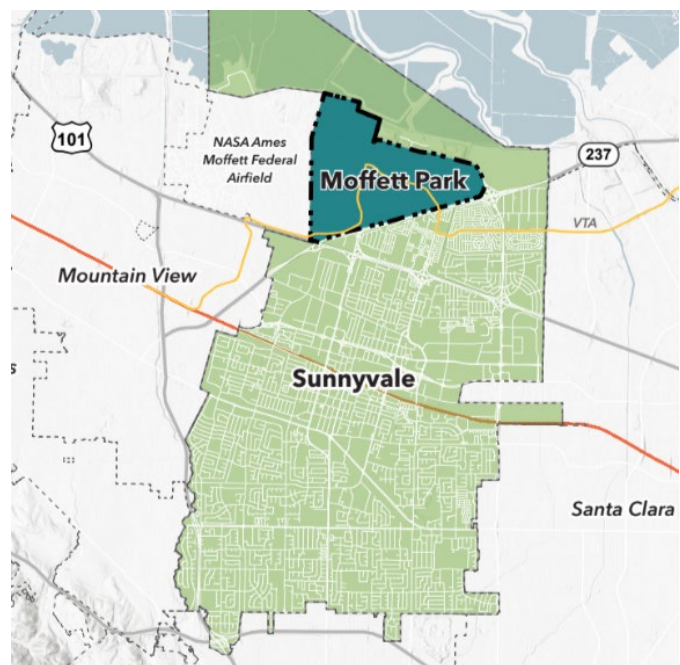
July 17, 2023  
Release #07 01 23

### **ECO-INNOVATION COMMUNITY PLANNED FOR 1,300-ACRE MOFFETT PARK**

*New 20-year plan will guide housing, jobs, amenities, and growth*

SUNNYVALE, Calif. – Sunnyvale’s City Council adopted a new Moffett Park Specific Plan at their July 11 meeting. The Plan will guide development over the next 20 years for 1,300 acres in north Sunnyvale known as Moffett Park.

Moffett Park is already home to leading technology companies. This and its strategic location have made it a well-known commercial hub. The new Plan builds on this foundation to create a vibrant mixed-use community. A significant feature of the Plan allows developers to build up to 20,000 housing units. At least 15% of these must be affordable to low-income households with a goal of achieving 20%. City zoning does not currently allow housing in this area.



“The new Moffett Park Specific Plan is a tremendous accomplishment that reflects Sunnyvale’s forward-looking and inclusive approach to urban planning,” said Mayor Larry Klein. “Together, we successfully reimagined a new community to address critical needs – like housing and environmental sustainability – well into the future.”

~ more ~

Key elements of the Plan include:

- **A mixed-use community**, blending commercial, residential, and recreational spaces. The buildout out of housing in Moffett Park will represent about 20% of future housing units in Sunnyvale.
- **Integrating ecology and open space into urban design** to create an interconnected system of habitat areas that supports biodiversity and local community health. The plan includes establishing an Ecological Combining District to expand and enhance emergent wetlands.
- **An innovation district** to foster collaboration among leading technology companies, startups, and research institutions. This supportive environment will attract and retain top talent, drive research and development, and stimulate entrepreneurship.
- **Sustainable design practices**, including energy-efficient buildings, green spaces, bike lanes, renovation and enhancement of natural landscapes, bird safe designs, and improved public transportation options. These minimize the carbon footprint and prioritize the well-being of residents and workers.
- **Enhanced transportation infrastructure**, including improved roadways, public transit systems, and pedestrian-friendly pathways. These will alleviate traffic congestion, provide convenient access to amenities, and facilitate seamless mobility in the area.
- **Attractive and accessible public spaces**, such as parks, plazas, and community gathering areas. These focal points for recreation, cultural activities, and social interactions will enhance overall quality of life.

“We developed the Plan through a multi-year planning and community engagement effort,” said Trudi Ryan, the City’s Community Development Director. “I want to acknowledge and thank everyone for their thoughtful input. A lot of time, energy and expertise went into this process. The results reflect the hard work and commitment by everyone involved.”

City staff are making final updates to the Plan. It becomes effective on Sept. 22, 2023. Learn more by:

- Reading the latest draft Plan on the [Moffett Park Specific Plan website](#)
- Accessing the [Council meeting materials for this item](#)